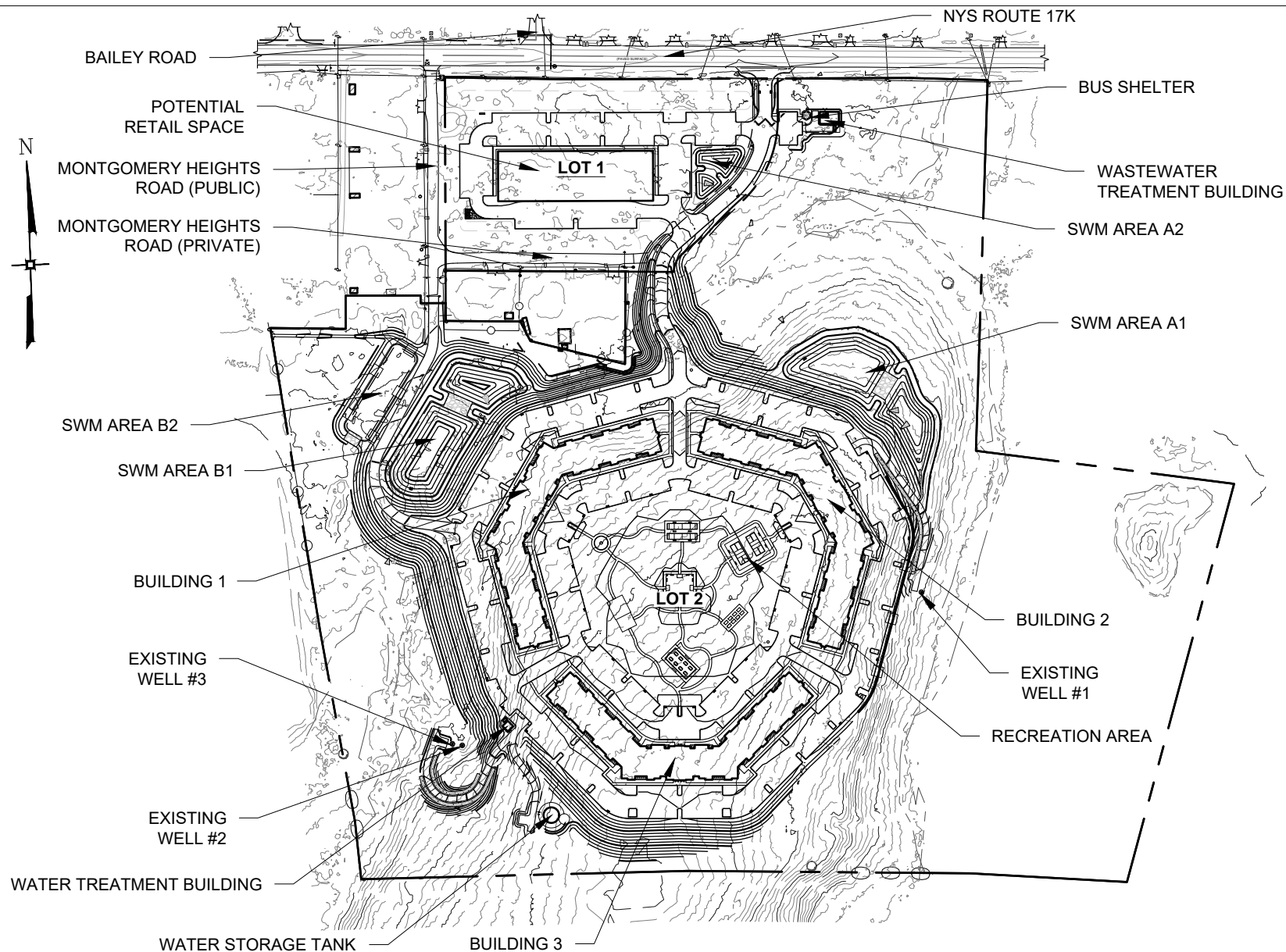


Drawing Name: Z:\103.0301 - Sheffield Apartments\EAF & EIS Figures\103.0301 - EIS Figures.dwg Date Printed: Nov 25, 2024, 10:43am



SOURCE: MAP BY ENGINEERING AND SURVEYING PROPERTIES, PC
DATED 09/13/2023

PROPOSED SITE LAYOUT

SHEFFIELD APARTMENTS
ROUTE 17K
TOWN OF MONTGOMERY
ORANGE COUNTY, NEW YORK

DATE: 12/15/2023
REV 11/25/2024
SCALE: 1"=300'

JOB # 103.0301
SHEET # 2.3A

ENGINEERING & SURVEYING PROPERTIES
Achieving Successful Results
with Innovative Designs

MONTGOMERY OFFICE
71 CLINTON STREET
MONTGOMERY, NY 12549
Ph: (845) 457-7727
WWW.EP-PC.COM